



OWNERSHIP STATUS OF POSSIBLE COVID 19 ISOLATION CENTRES: KIBERA









Legend

-  Roads
-  Rivers and streams

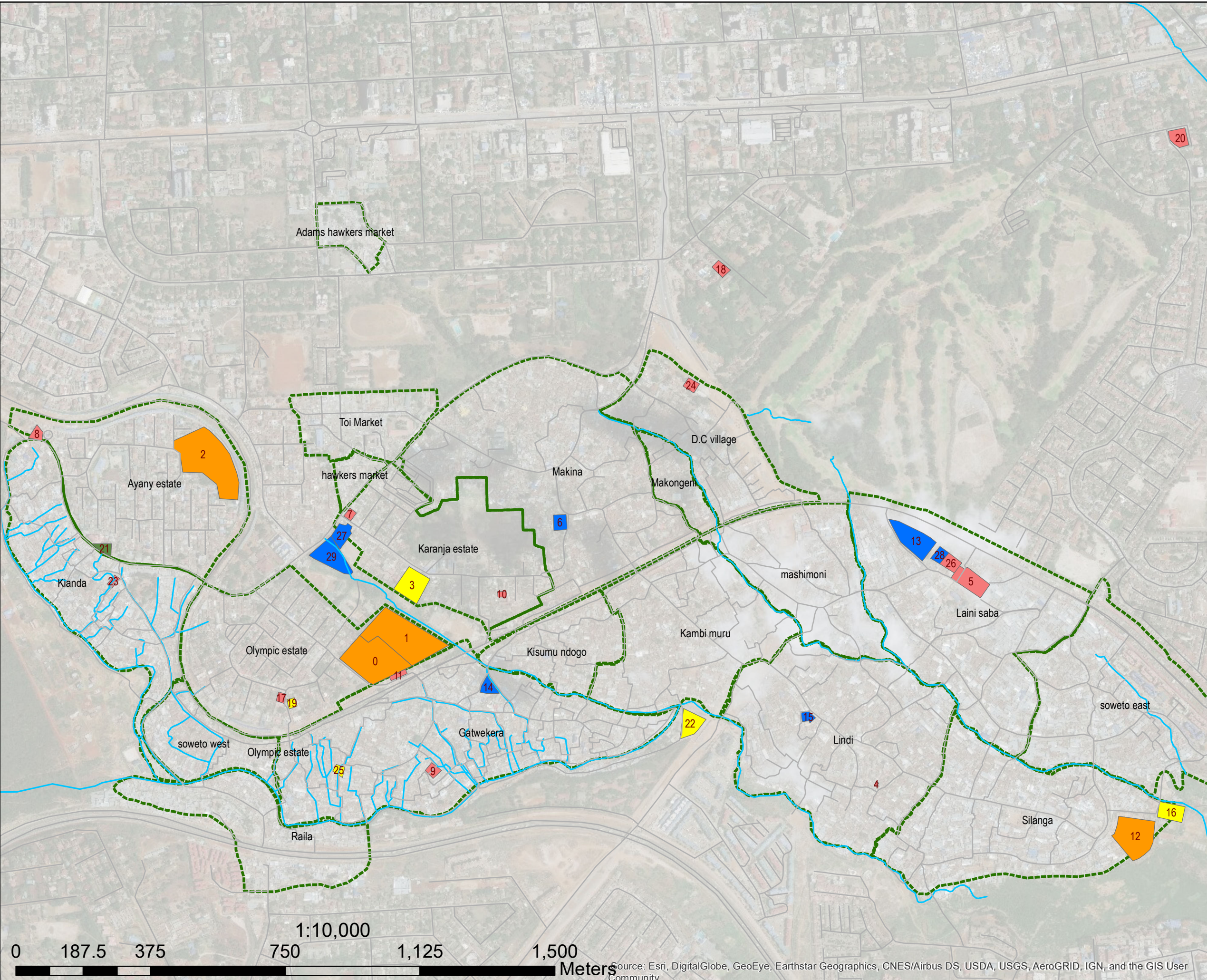
Isolation areas

Ownership

-  CBO
-  FBO
-  NGO
-  Private
-  Public
-  Kibera villages

Code	Name of site
0	Olympic pry sch
1	Olympic high sch
2	Ayany pry sch
3	Kibera day pry sch
4	Amani Kibera resource centre
5	Kibera community health centre- AMREF
6	Makina Jamia Mosque
7	Garden of Hope foundation
8	Ushirika Medical Clinic
9	SHOFCO
10	Uweza Foundation
11	Kibera Town Centre (KTC)
12	Undugu Grounds
13	Christ the King Catholic Church
14	PAG Church
15	Lindi Mosque
16	New Nairobi Dam Community Group
17	Carolina for Kibera (CFK)
18	Kenya NGO Alliance Against Malaria
19	Lea Toto Medical Centre
20	Care International Kenya
21	Bliss Medical Centre Kibera
22	Kibera South Health Center
23	The Action Foundation Hub
24	Umande Trust
25	CDC Tabitha Clinic
26	YMCA
27	Masjid Al-Aqsa
28	Church of God Kibera
29	PCEA Emmanuel Chuch

Map prepared and produced by:
Slum Dwellers International
(SDI-Kenya)



Source: Esri, DigitalGlobe, GeoEye, Earthstar Geographics, CNES/Airbus DS, USDA, USGS, AeroGRID, IGN, and the GIS User Community

